

IoT gateway for OEM, smart home solutions and other IoT applications

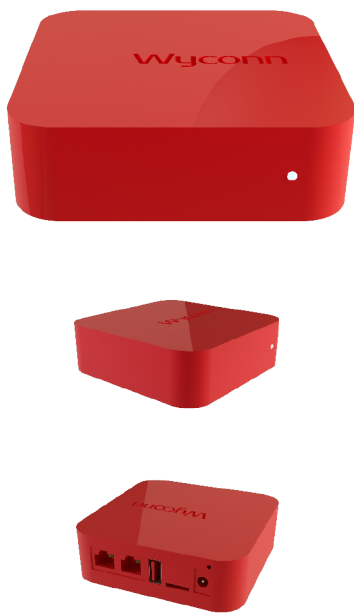
Easy to deploy and scale

Cloud-enabled

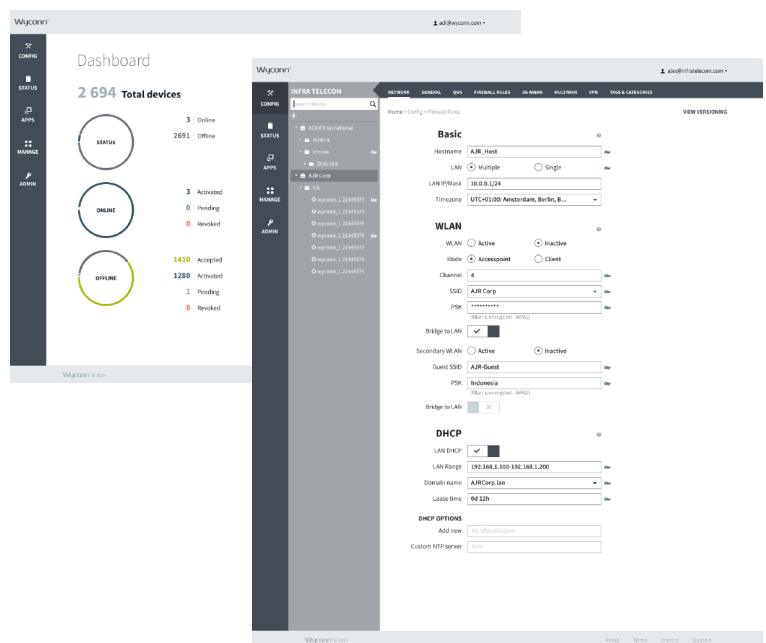
Various interfaces to support different solutions

Gateway for sensors, smart home apps and other IoT applications

Wyconn Series 1000



Wyconn Management Console



Models	Ethernet Interfaces	WLAN	Embedded 3G/4G	Embedded SIM	Memory	Additional Interfaces
WYD-1000	2 x 10/100 Mbps	2.4 GHz 802.11 b/g/n	No	No	128 MB RAM 64 MB Flash microSD	1 x USB 2.0 2 x Internal RS232

All models with realtime clock and watchdog. Optional: 868 MHz/ZigBee/Z-Wave radio modules; battery pack.

SECURITY

Features and Benefits

Firewall	An integrated Stateful Packet Inspection firewall (SPI) provides network perimeter security. It offers users secure, dynamic access control to network resources. Further features: Network address and port translation (NAT/DNAT/SNAT/NAPT), Security zones	
Dynamic Application Helpers	Dynamic Application Helpers allow the control of applications, which are using temporary TCP or UDP ports. Supported applications are: Amanda (UDP 10080) SANE (TCP 6566) FTP (TCP 21) SIP (UDP 5060) H323 (UDP 1719, TCP 1720) SNMP (UDP 161) IRC (TCP 6667) TFTP (UDP 69) NetBIOS-NS (UDP 137) IPsec pass through PPTP (TCP 1729)	
VPN Server	Offers easy deployment and simplified maintenance of VPN connections. Supports IPsec and OpenVPN. IPsec allows interoperability with other vendors products. Auto tuning tunnels.	
VPN Server, Symmetric Encryption Algorithms	Null, DES, 3DES, AES, Blowfish, Camellia; [Serpent, Twofish possible with optional package]	
VPN Server, Symmetric Encryption Key Sizes [Bits]	128, 192, 256	
VPN Server, Block Cipher Modes	CBC, CTR, CCM, GCM	
VPN Server, Hashing Algorithms	MD5, SHA1, SHA256, SHA384, SHA512, AES-XCBC	
VPN Server, Diffie-Hellman Group Sizes [Bits]	DH: 768, 1024, 1536, 2048, 3072, 4096, 6144, 8192; ECC: 192, 224, 256, 384, 521	
Public-key infrastructure (PKI) support	Provides device authentication and key management via integrated cloud management solution.	
Real-time clock	A built in real-time-clock maintains an accurate date and time for application that require an accurate time stamp, such as logging and digital certificates for creating private keys.	

INTEGRATED WLAN

WLAN Hardware	The integrated Wi-Fi access point offers IEEE 802.11 b/g/n standard support for mobile access to high-bandwidth data; built in antenna Enables Dynamic Frequency Selection (DFS) Max data rate up to 150 Mbps Multiple-output technology (MIMO)	
WLAN Software and Security	Autonomous access point or WLAN client Software adjustable transmit power WPA, WPA2 MAC authentication and filter	Configurable limit to the number of wireless clients Configurable RADIUS authentication for wireless clients Pre-shared key (PSK)
Service set identifiers (SSIDs)	Multiple	
Wireless VLANs	Multiple	
Multiple broadcast service set identifiers (MBSSIDs)	Yes	

INTEGRATED NETWORK SERVICES

WAN	PPPoE, PPTP, DHCP client, Static IP, PPTP, L2TP Full support for IPv6	
IP and IP Services	<ul style="list-style-type: none"> - IPv4 Support - IPv6 Support - Optional transparent forwarding support (Layer-2 bridging) - Optional Layer-7 traffic detection for monitoring and QoS - QoS classes with hierarchical bandwidth sharing - Layer 2 tunneling protocol (L2TP) - Dynamic domain name system (DNS) - DNS Proxy - DHCP IPv4 Server - DHCP IPv6 Server 	<ul style="list-style-type: none"> - Arbitrary options for DHCP - VLAN Support - IPv6 address assignment relay - Transition Mechanism IPv6 --> 6to4 - Caching DNS Server IPv4 and IPv6 - NTP Client - NTP Server - TFTP Server - Syslog export to remote syslog service - Samba guest access - tcpdump

Location Services	Self-localization via GSM cells Self-localization via WiFi fingerprinting	Self-localization via GPS (only outdoor usage)
Routing Protocols	RIP V.1, RIP V.2, BGP, OSPF, VRRP, NHRP, GRE	
Remote Management Protocol	Telnet, HTTP, HTTPS, SSH	
INTEGRATED SWITCHING (LAN/WAN)		
2 x 10/100 Mbps managed switch	802.1q VLAN tagging	
MONITORING AND REPORTING		
Connectivity Control	Throughout, connectivity monitoring and SMS alerts	
History Reports	Historical reports and statistics	
VPN Control	VPN tunnel and latency monitoring	
Log Files	Log files streaming via syslog to the Wyconn Management Console	
Remote Diagnostic	Live remote packet capture (tcpdump) Real-time diagnostic and troubleshooting tool (SSH)	Aggregated event logs with instant search
MANAGEMENT SERVICE		
Wyconn Management Console	Managed via the web using Wyconn Management Console. Configuration and management of enterprise network management is automated and simplified without manual intervention. Central configuration of all services and features (e.g. DHCP, DNS, WLAN, VPN, Firewall). Centralized policy management Role based administration Individual Apps for special solution management. (e.g. Network Power Control)	Configuration Version Management (audit trail, revision control, compliance) IP Address Management (single IPs, IP networks, IP ranges, calculated IP assignment) Using Category and Tags for individual device management (manual and automatic assignment of tags based on device model, geographical location and many others) Dashboard for quick service status overview and operation
PHYSICAL AND ENVIRONMENT SPECIFICATIONS		
Dimensions	85 mm x 85 mm x 25 mm (3.35 in x 3.35 in x 1 in)	
Weight	~ 0.25 kg (0.55 lbs.)	
Power	Power Jack, DC 9V/1 Amp power supply (included)	
Operating temperature	0 to 40 °C (32 to 140 Fahrenheit)	
Humidity	5 to 95 % non-condensing	
CERTIFICATIONS		
Certificates	CE FCC RoHS	
WARRANTY		
Limited one year guarantee		

Wyconn™



Product	Wyconn 1000	Wyconn 2000	Wyconn 3000	Wyconn 3000E
Application	IoT gateway	M2M	Branch connector	Extended branch connector
Wireless Connectivity	2.4 GHz 802.11 b/g/n	2.4 GHz 802.11 b/g/n HSPA+ (Model WYD-2000-3G) Embedded global SIM Additional SIM slot	Dual Band 2.4 GHz / 5 GHz 802.11 a/b/g/n (concurrent) HSPA+ (Model WYD-3000-3G) Embedded global SIM Additional SIM slot	Dual Band 2.4 GHz / 5 GHz 802.11 a/b/g/n (concurrent) HSPA+ (Model WYD-3000E-3G) Embedded global SIM Additional SIM slot
Physical Connectivity	2 x 10/100 Mbit/s Ethernet 1 x USB 2.0 2 x Internal RS232	2 x 10/100 Mbit/s Ethernet 1 x USB 2.0 1 x External RS232 (RJ45) 1 x Internal RS232	5 x 10/100/1000 Mbit/s Ethernet 2 x USB 2.0 1 x External RS232 (RJ45) 1 x Internal RS232	5 x 10/100/1000 Mbit/s Ethernet 5 x 10/100 Mbit/s Ethernet 2 x USB 2.0 1 x External RS232 (RJ45) 1 x Internal RS232
Removable storage	microSD (not removable)	microSD	microSD	microSD
Optional	868 MHz/ZigBee/Z-Wave radio modules Battery pack	868 MHz/ZigBee/Z-Wave radio modules Battery pack	868 MHz/ZigBee/Z-Wave radio modules Battery pack	868 MHz/ZigBee/Z-Wave radio modules Battery pack
Size and weight	85 mm x 85 mm x 30 mm (3.35 in x 3.35 in x 1.2 in) ~ 0.25 kg (0.55 lbs.)	108.2 mm x 80 mm x 30 mm (4.25 in x 3.15 in x 1.2 in) ~ 0.4 kg (0.9 lbs.)	186 mm x 85 mm x 30 mm (7.3 in x 3.35 in x 1.2 in) ~ 0.5 kg (1 lbs.)	241 mm x 126 mm x 30 mm (9.5 in x 4.96 in x 1.2 in) ~ 0.7 kg (1.5 lbs.)

Wyconn GmbH
Rennweg 97-99
1030 Vienna, Austria

sales@wyconn.com
support@wyconn.com

wyconn.com

Subject to change. For complete product specifications, see www.wyconn.com.
Wyconn is a trademark of Wyconn GmbH. All other trademarks, logos, and copyrights are property of their respective owners.
VAT No ATU67398648